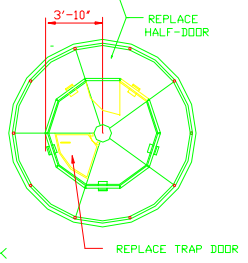
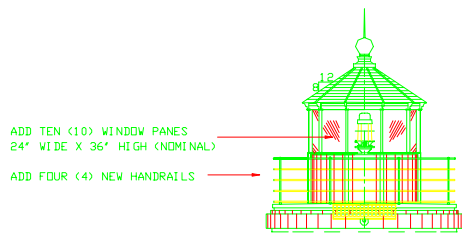


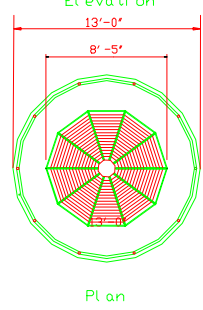
- FINISH SCHEDULE**
(AFTER REPAIRS ARE COMPLETED)
- 1 SANDBLAST ALL INT. METALS
 - 2 ON ALL IRON MATERIAL, APPLY TWO (2) COATS OF INTERIOR EPOXY SEMI-GLOSS PAINT
 - 3 ALL COPPER MATERIALS TO BE LEFT UNPAINTED
 - 4 APPLY A NON-SKID PAINT COATING TO INSIDE DECK SURFACE



LANTERN INTERIOR & DECK

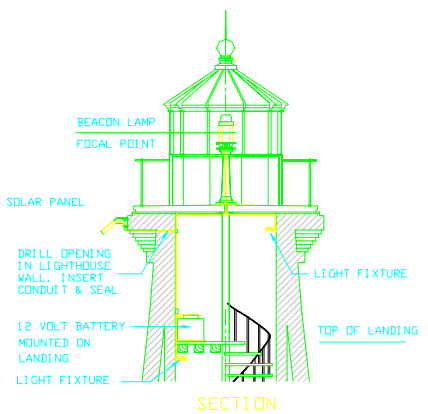


- FINISH SCHEDULE**
(AFTER REPAIRS ARE COMPLETED)
- 1 SANDBLAST ALL EXT. METALS
 - 2 ON ALL IRON MATERIAL, APPLY TWO (2) COATS OF EXTERIOR EPOXY SEMI-GLOSS PAINT
 - 3 ALL COPPER MATERIALS TO BE LEFT UNPAINTED
 - 4 APPLY A NON-SKID PAINT COATING TO OUTSIDE DECK SURFACE

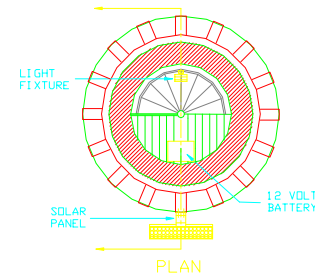


LANTERN INTERIOR & DECK

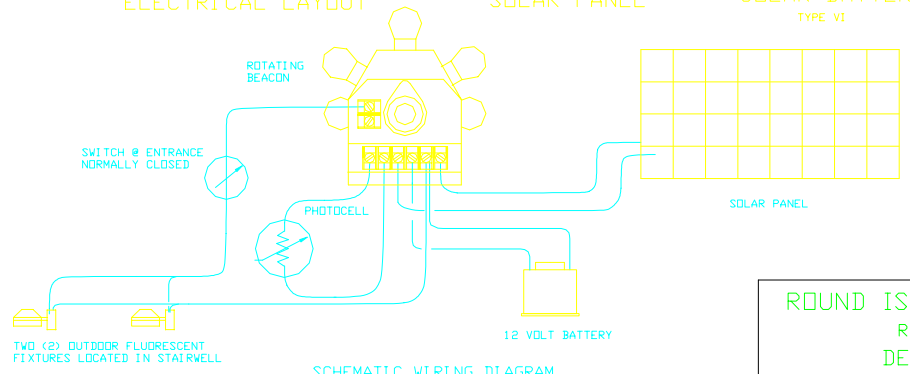
LANTERN DETAILS



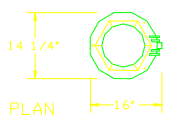
SECTION



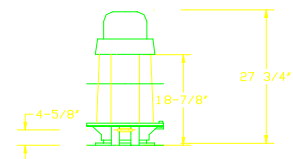
ELECTRICAL LAYOUT



SCHEMATIC WIRING DIAGRAM

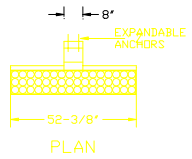


PLAN

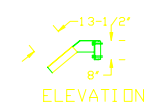


ELEVATION

LAMP DETAIL

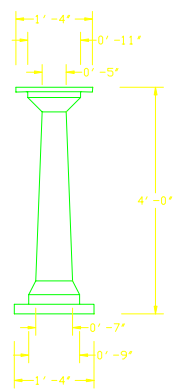


PLAN

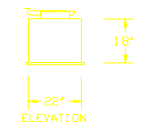


ELEVATION

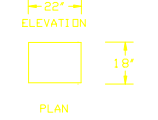
SOLAR PANEL



LAMP SUPPORT STAND



ELEVATION

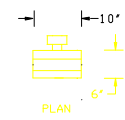


PLAN

SOLAR BATTERY
TYPE VI



ELEVATION



PLAN

LIGHTS (2)
DC FLUORESCENT

ROUND ISLAND LIGHT HOUSE
RESTORATION
DETAIL SHEET
SHEET 4

DATE: AUGUST 1995
PREPARED BY: COMPTON ENGINEERING PA
PASCAGOULA, MISSISSIPPI

RLH3